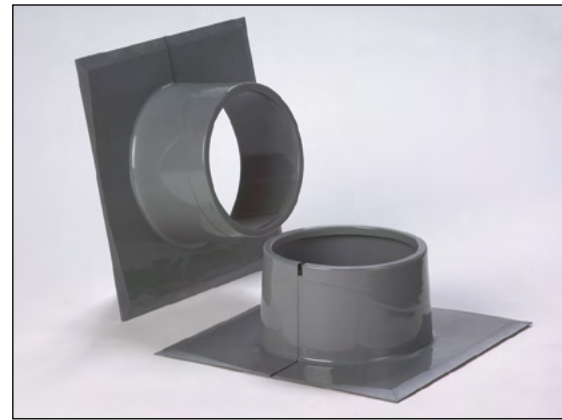


Features and Components

Use: Unit used to seal uneven penetrations through the membrane that are difficult to flash. The penetration pan is slit on one side to allow for positioning around objects to be flashed. A welding tab is included to seal the penetration pan once installed.

Material: 125 mil (3.18 mm) thick, one piece molded unit, vacuum-formed and fabricated from impact-resistant rigid PVC (polyvinyl chloride).

Color: Grey



Component

A

Accessory

Single Ply

Type

FP

Penetration

System Compatibility This product may be used as a component in the following systems. Please reference product application for specific installation methods and information.

Multi-Ply	BUR		APP		SBS				
	HA	CA	CA	HW	HA	CA	HW	SA	MF
<i>Do not use in Multi-Ply systems</i>									

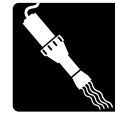
Single Ply	TPO		PVC		EPDM		
	MF	FA	MF	FA	MF	FA	BA
<i>Compatible with all Single Ply systems</i>							

Key: HA = Hot Applied CA = Cold Applied HW = Heat Weldable SA = Self Adhered MF = Mechanically Fastened FA = Fully Adhered BA = Ballasted

Peak Advantage® Guarantee Information

Systems
Approved for use in any JM Peak Advantage Guarantee System

Installation/Application



Hot Air Weld

- Do not install in direct contact with asphalt or coal tar pitch
- For use with JM EPDM/PVC Pourable Sealer
- Refer to JM PVC, TPO, or EPDM applicator guides or detail drawings for instructions

Packaging and Dimensions

Size	6" (15.2 cm) diameter
Nominal Thickness	0.125" (3.18 mm)
Pockets per Box	12
Weight per Box	10 lb (4.5 kg)

Storage

Storage Conditions	Store indoors, out of direct sunlight, keep clean and dry prior to use.
--------------------	---